

(7-1)

(13) $4:10:16$
 $2:5:8$

(14) $12:22:34$

(24) $4x+5x=90$
 $x=10$

(25) $11x+4x=180$
 $x=12$

$40, 50$

$132, 48$

(26) $3x+4x+5x=180$
 $x=15$

(27) $9x+7x=96$
 $x=7.5$

$45, 60, 75$

$37.5, 52.5$

(28) $3x+3x+2x=180$
 $x=22.5$

(29) $(6-2) \cdot 180 = 720$

$67.5, 67.5, 45$

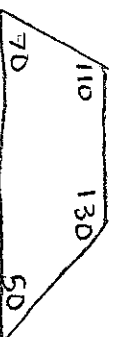
$720 = 4x+5x+5x+8x+9x+9x$
 $720 = 40x$
 $18 = x$
 $72, 90, 90, 144, 162, 162$

(30) $8x+11x+14x=132$
 $33x=132$
 $x=4$

(31) $5x+7x+11x+13x=360$
 $36x=360$
 $x=10$

$32, 44, 56$

$50, 70, 110, 130$



(32) Hexagon: $720 \div 6 = 120$

$$\frac{120}{60} = \boxed{\frac{2}{1}}$$

Decagon: $1440 \div 10 = 144$

$$\frac{144}{36} = \boxed{\frac{4}{1}}$$

N-Gon:

$$\frac{\frac{180(n-2)}{n}}{\frac{360}{n}} = \frac{\frac{180(n-2)}{n}}{\frac{360}{n}}$$

$$\frac{180(n-2)}{360} \cdot \frac{n}{360} = \frac{180(n-2)}{360} = \boxed{\frac{n-2}{2}}$$

(33) $0,32 \cdot 325 = \boxed{104}$

(33) $\frac{104}{336} = \boxed{0,310}$

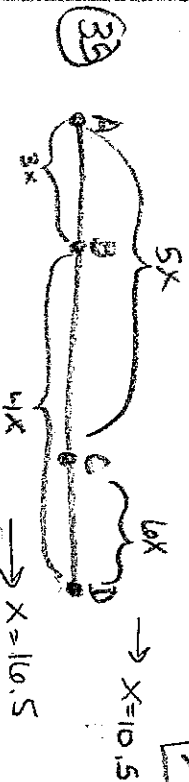
(34) $\frac{24+x}{30+x} = 0,85$

$$24+x = 0,85(30+x)$$

$$24+x = 25,5 + 0,85x$$

$$0,15x = 1,5$$

$$\boxed{x = 10}$$



$4x = 66$

$x = 16,5$

$AD = 7(16,5) = 115,5$

$5x + 6x = 115,5$

$11x = 115,5$

$x = 10,5$

$AC = 5x = 52,5$

(310)

x to y?

$$\frac{4}{y} + \frac{3}{x} = 44$$

$$\frac{12}{y} - \frac{2}{x} = 44$$

$$xy \left(\frac{4}{y} + \frac{3}{x} \right) = \left(\frac{12}{y} - \frac{2}{x} \right) xy$$

$$\cancel{4xy} + \cancel{3xy} = \cancel{12xy} - \cancel{2xy}$$

$$4x + 3y = 12x - 2y$$

$$5y = 8x$$

$$y = \frac{8x}{5}$$

$$\frac{4}{\frac{8x}{5}} + \frac{3}{x} = 44$$

$$\times \left(\frac{20}{8x} + \frac{3}{x} \right) = (44)x$$

$$\cancel{\frac{20x}{8x}} + \cancel{\frac{3x}{x}} = 44x$$

$$S.S = 44x$$

$$0.125 = x$$

$$y \left(\frac{4}{y} + \frac{3}{0.125} \right) = (44)y$$

$$\cancel{4y} + \frac{3y}{0.125} = 44y$$

$$4 + 24y = 44y$$

$$4 = 20y$$

$$0.2 = y$$

$$\frac{6.125}{0.2} = \frac{125}{200}$$

$$\frac{25}{40} = \boxed{\frac{5}{8}}$$

